

# State of Wyoming Corner Record

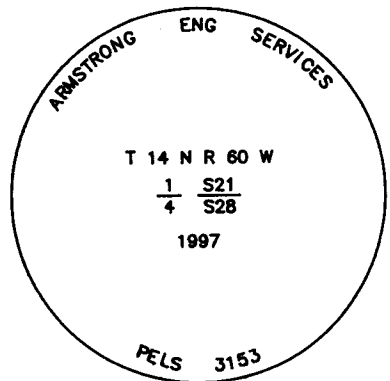
(In compliance with the CORNER PERPETUATION AND FILING ACT, Wyoming Statutes, 1977, Section 86-11-101, et. seq., and the Rules and Regulations of the Board of Registration for Professional Engineers and Professional Land Surveyors.)

Reverse side of this form may be used if more space is needed.

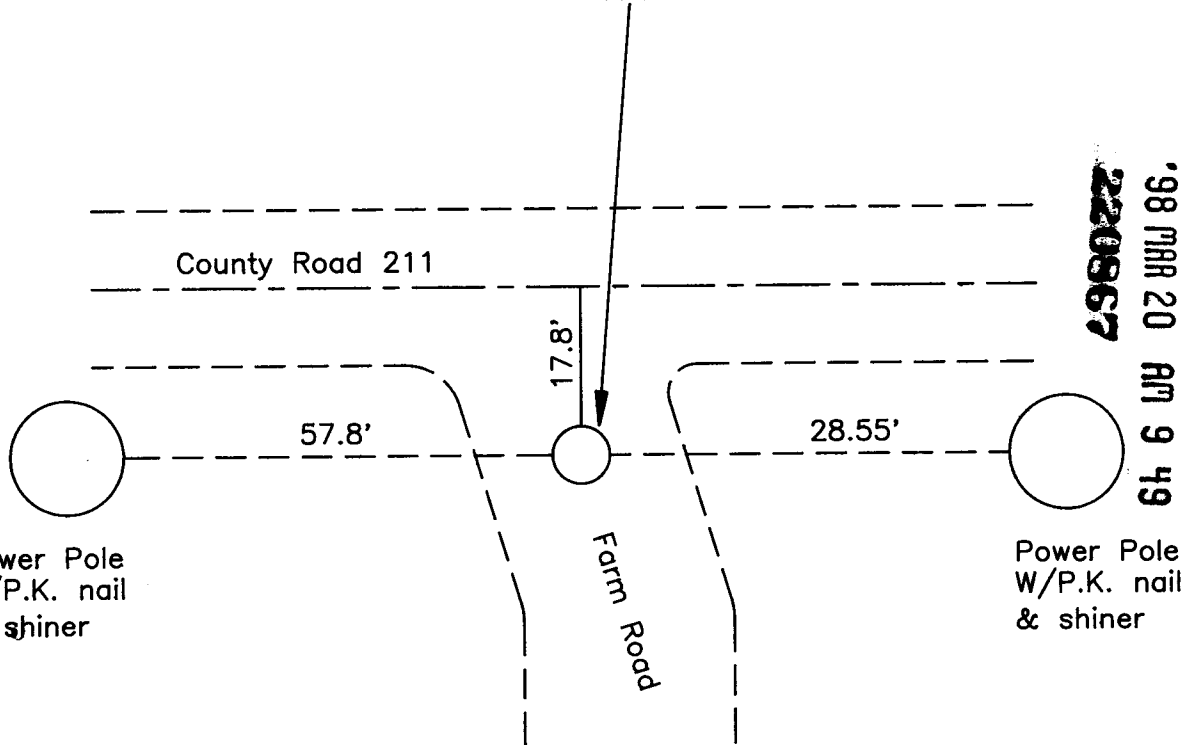
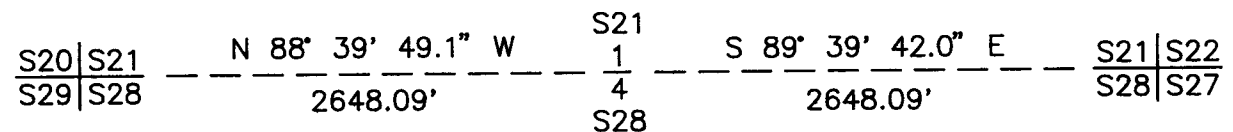
**Record of original survey and citation of source of historical information (if corner is lost or obliterated). Description of corner monumentation evidence found and/or monument and accessories established to perpetuate the location of this corner. Sketch of relative location of monument, accessories, and reference points with course and distance to adjacent corner(s) (if determined in this survey). Method and rationale for reestablishment of lost or obliterated corner.**

No corner evidence found for original corner to section(s) 21,28 called out in original G.L.O notes as a set red sand stone 20x9x4.

Set 3 1/2" marked alum cap on 5/8" x 24" rebar, 6" below grade marked as noted on right.



*Monument Inscription*

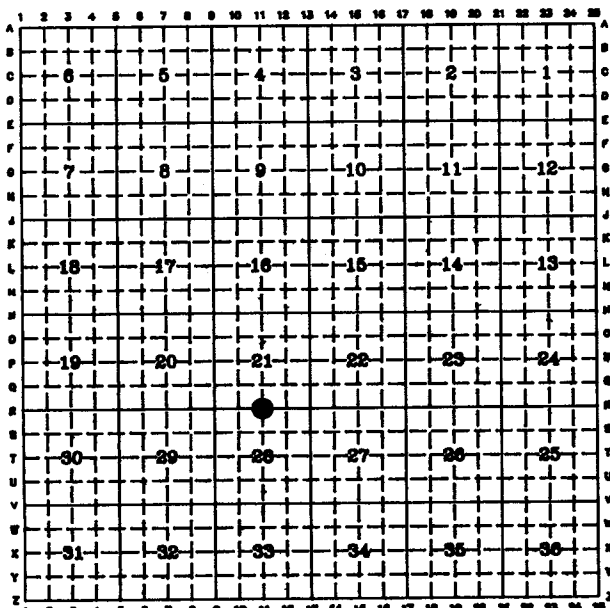


LARAMIE COUNTY CLERK  
CHEYENNE, WY.

1998 MAR 20 AM 9 49  
220867

Date of Field Work: 09/10/97 Office Reference: Field book No. 43

**CROSS INDEX DIAGRAM**



Firm/Agency, Address

ARMSTRONG  
Armstrong Engineering Services  
816 E. Carlson  
Cheyenne, Wyoming 82008  
(307) 632-2559

This corner record was prepared by me or under my direction and supervision.

SEAL & SIGNATURE

*for Wm. Armstrong*



**BOOK 1475**

**1614**